

05A	CIRCUIT UPDATE, ECO-21 0425, 21-0478, CCO, 1314-001	RPS		15/08/00									
4A	ROTATE "Q118" & "Q117-CN 210078	RPS		07/09/98									
3A	DEVICE COPPER & FUSE UPDATES	RPS		30/05/98									
2A	3340 2x3 RF FEASIBILITY PCB	RPS		22/09/97									
1A	CHANGED VALUES OF R219,C230,R149,C156 TO R162.	YH		15/12/95									
REV/ISS	AMENDMENTS	DRAWN	CHKD	D.O.	APVD	DATE	REV/ISS	AMENDMENTS	DRAWN	CHKD	D.O.	APVD	DATE

	P6	ADDED 1ND CAPS FOR EMC PROBLEM(BY P3)	YH		02/11/95
	P5	ADDED A DUALBAND CIRCUIT FROM ISSUE P2	YH		01/8/95
	P2	UPDATED FOR BCM COMPARISON	J.F.	J.F.	24/5/94
	P1	PROGRAMMABLE T2K3, CLONED OFF 2K3VFL7B	J.F.	J.F.	28/3/94

*TYPE	*R129	*R130	*R134	*R136	*R137	*R139	*R152	*R154	*R162	*R163	*R164	*R165	*R166	*R167	*R168	*R170	*R194	*C120	*C189	*C190	*Q116	*Q117	*Q118	*Q119	*Q120
DUALBANDWIDTH STANDARD	0S	4K7S 0S	4K7S	220KS	10KS	10KS	1K5S 3K3S	220KS	22KS	18KS	3K3S	470KS	560KS	2K2S	10KS	4K7S	2K2S	390KS	470P/16	150PS	150PS	BFR31	BC848	BC848	BC848

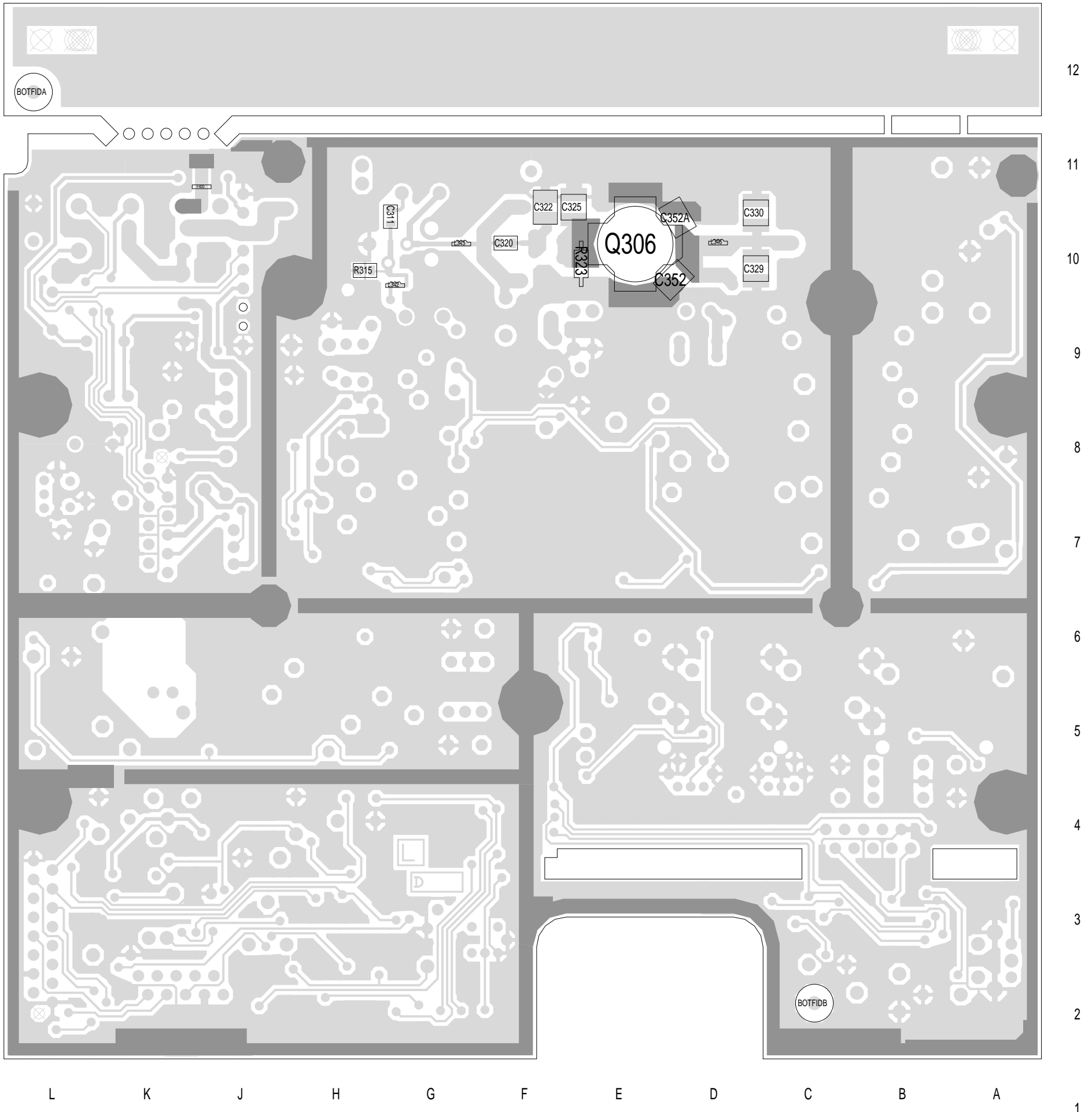
SPECIAL NOTE:
(THIS T2K3 DUAL BAND BOARD IS PROTO TYPE ONLY)

TAIT ELECTRONICS
T2000-300 VHF MOBILE RADIO PROGRAMMABLE

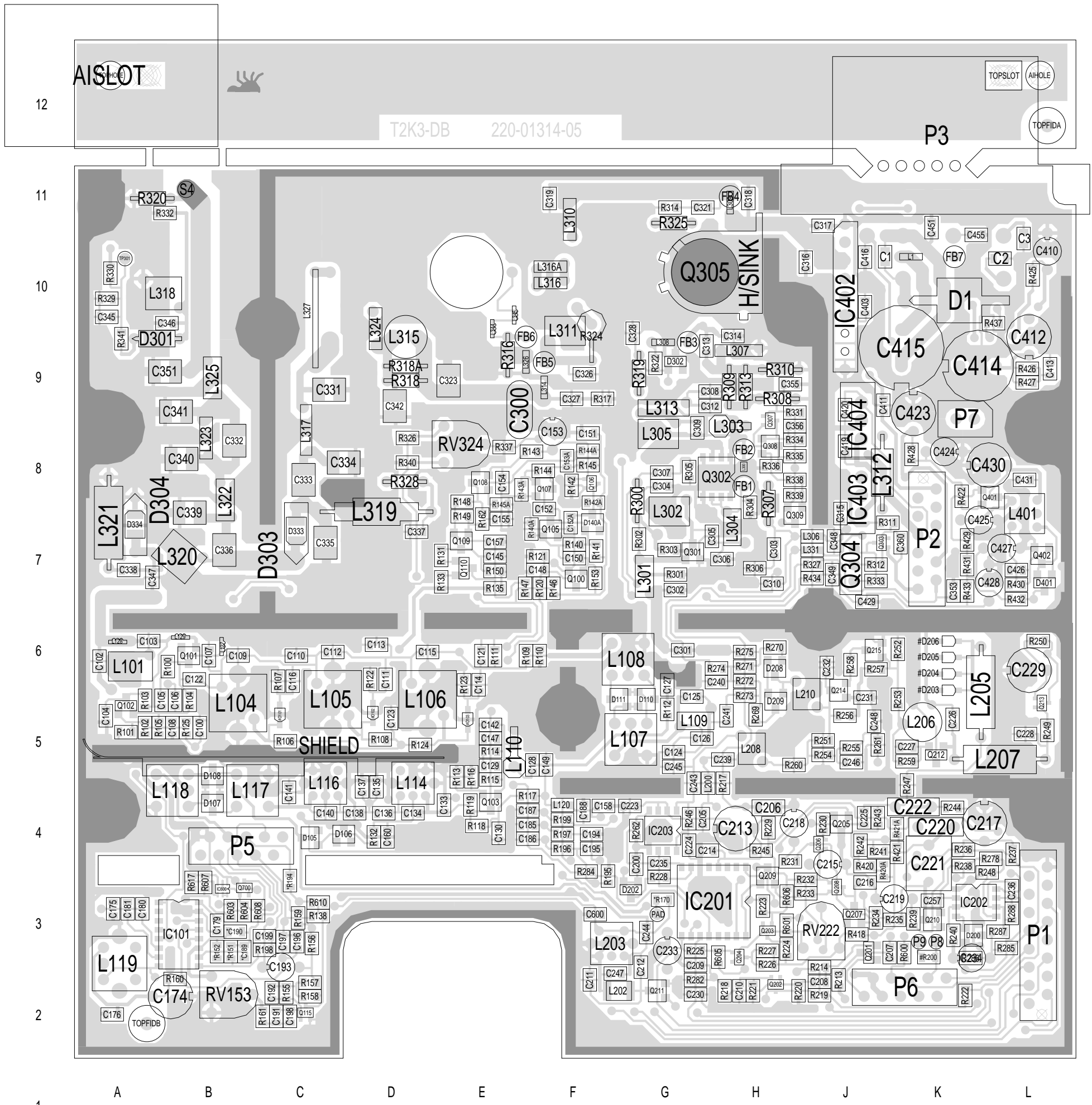
220-01314-05
2-SC-1

PROJECT DESIGNER: FILE NAME: DATE: NO. SHEETS: 2
2K3 DUAL BAND RPS 131405a 15-Aug-00

Scale: 1:7.1 ; Rotation: 90 degrees

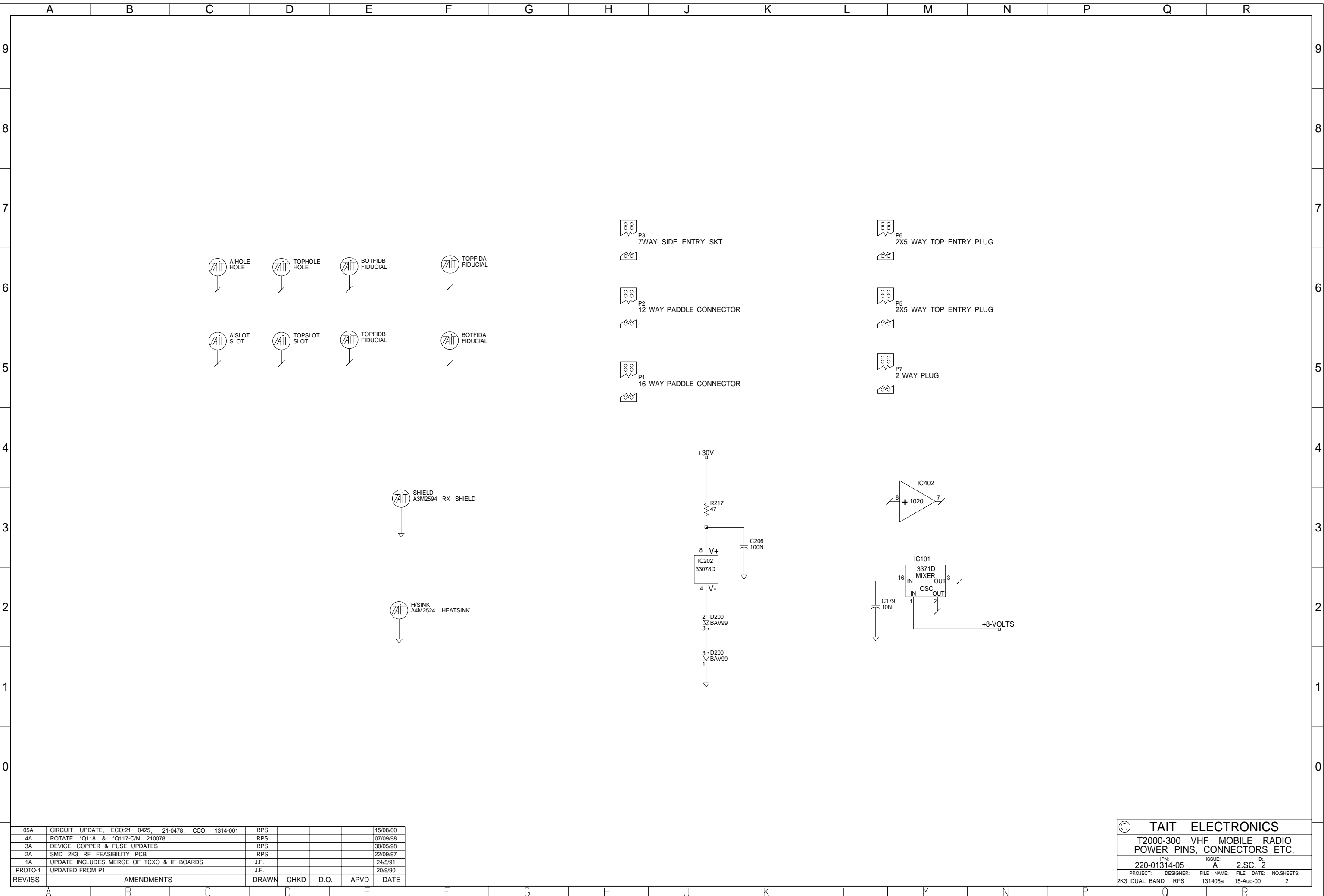


L K J H G F E D C B A 12 11 10 9 8 7 6 5 4 3 2 1



TAIT ELECTRONICS IPN: 220-01314-05 ISS: A ID: 1.TA DATE: 15 Aug 2000
 T2K3-DB PCB LAYOUT - TOP SIDE

Scale: 1:7.1 ; Rotation: 270 degrees



05A	CIRCUIT UPDATE, ECO:21 0425, 21-0478, CCO: 1314-001	RPS				15/08/00
4A	ROTATE *Q118 & *Q117-C/N 210078	RPS				07/09/98
3A	DEVICE, COPPER & FUSE UPDATES	RPS				30/05/98
2A	SMD 2K3 RF FEASIBILITY PCB	RPS				22/09/97
1A	UPDATE INCLUDES MERGE OF TCXO & IF BOARDS	J.F.				24/5/91
PROTO-1	UPDATED FROM P1	J.F.				20/9/90
REV/ISS	AMENDMENTS	DRAWN	CHKD	D.O.	APVD	DATE

© TAIT ELECTRONICS			
T2000-300 VHF MOBILE RADIO POWER PINS, CONNECTORS ETC.			
IPN:	ISSUE:	ID:	
220-01314-05	A	2.SC. 2	
PROJECT:	DESIGNER:	FILE NAME:	FILE DATE:
2K3 DUAL BAND	RPS	131405a	15-Aug-00
			NO.SHEETS: 2